

NO.	LESLIE CO.	FG-FGA	FT-FTA	REB	P	TP	A
F	12 Karen Valentine	0-2	4-6	5	0	4	0
F	35 Donna Wilson	1-1	0-0	4	1	2	0
G	25 Lisa Baker	1-2	4-5	0	0	6	2
	21 Lori Lewis	0-1	0-0	1	0	0	0
C	53 Sandy Sizemore	5-8	0-2	6	4	10	0
G	13 Tina Sizemore	0-2	0-0	0	1	0	1
	11 Melinda Baker	-	DNP				
	33 Melissa Lewis	-	DNP				
	11 Vickie Roark	-	DNP				
	31 Marion Hornsby	0-0	0-1	0	0	0	0
	43 Rhonda Whittaker	0-1	0-0	0	0	0	0
	23 Tammy Hoskins	-	DNP				
		-	-				
		-	-	1	D.B.		
TOTALS		7-17	8-14	17	6	22	3

PERCENTS 41.2 57.1 0 TEAM REBOUNDS (NOT IN TOTAL)

NO.	OWENSBORO	FG-FGA	FT-FTA	REB	P	TP	A
		-	-	1	D.B.		
C	12 Mary Todd Horell	12-22	2-3	1	2	6	0
	22 Laurie Gaddis	0-0	0-0	0	0	0	0
	50 Cathy Watkins	-	DNP				
	31 Lisa Sowers	-	DNP				
F	32 Georgia Moss	3-7	0-0	3	3	6	1
G	35 Wendy Morton	5-9	0-1	4	1	10	5
	34 D. Swanagan	-	DNP				
G	40 Anita Griffith	5-12	0-1	6	1	10	1
	41 Rhonda Carbon	-	DNP				
F	43 Donetta Owsley	4-8	0-0	5	3	8	0
		-	DNP				
	45 Stacy Humphrey	0-0	0-0	1	0	0	0
	52 Paulet Smith	-	DNP				
TOTALS		19-38	2-5	21	10	46	7

PERCENTS 50.0 40.0 0 TEAM REBOUNDS (NOT IN TOTAL)

Qtrs: 13-9 = 22
 SCORE BY
 OFFICIALS: Wally Bevens + Dottie Brothers

Owensboro
 18-22 = 40

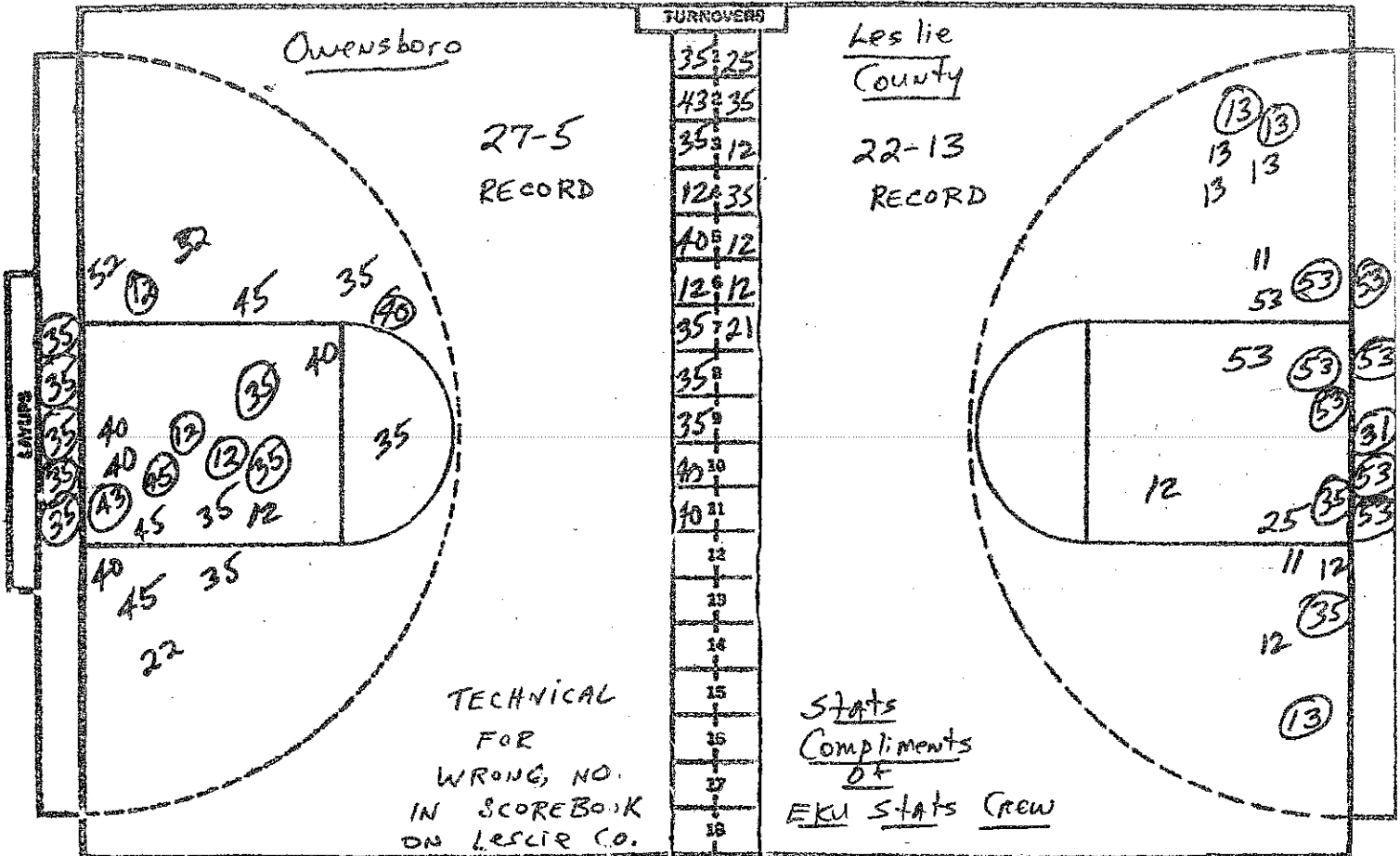
CAGE CHART

Owensboro

AT Leslie County

DATE March 26, 1981

FINA



NO.	OWENSBORO	FG-PGA	FT-FTA	RB	P	TP	A
		-	-	1 D.B.			
C	12 Mary Todd Horrel	5-6	2-3	7	4	12	0
	22 Laurie Gaddis	0-2	0-0	2	0	0	0
	50 Cathy Watkins	0-0	0-0	0	0	0	0
	31 Lisa Sowders	-	DNP				
F	32 Georgia Moss	3-7	0-0	6	4	6	2
G	35 Wendy Morton	12-20	3-5	5	1	27	6
	34 D. Swanagan	0-0	0-1	1	0	0	0
G	40 Anita Griffith	6-16	0-1	10	2	12	3
	41 Rhonda Carbon	0-0	0-0	0	0	0	0
F	43 Donetta Owsley	5-9	0-0	6	4	10	0
		-	-				
	45 Stacy Humphrey	1-4	2-2	2	1	4	1
	52 Paulet Smith	0-1	0-0	2	0	0	0
TOTALS		32-65	7-12	42	16	71	12

PERCENTS 49.2 58.3 0 TEAM REBOUNDS (NOT IN TOTAL)

NO.	LESLIE CO.	FG-PGA	FT-FTA	RB	P	TP	A
F	12 Karen Valentine	0-5	4-6	7	2	4	0
F	35 Donna Wilson	3-3	0-0	5	1	6	0
G	25 Lisa Baker	1-4	4-5	0	0	6	2
	21 Lori Lewis	0-0	0-0	1	0	0	0
	53 Sandy Sizemore	12-18	0-4	11	4	24	0
G	13 Tina Sizemore	3-8	0-0	1	2	6	1
	1 Melinda Baker	0-2	0-0	3	0	0	0
	3 Melissa Lewis	0-1	1-2	0	2	1	0
	11 Vickie Roark	0-0	0-0	0	0	0	0
	8 Marion Hornsby	1-1	1-3	0	0	3	0
	3 Rhonda Whittaker	0-1	0-0	0	0	0	0
	3 Tammy Hoskins	0-1	0-0	1	1	0	0
		-	-				
		-	-	1 D.B.			
TOTALS		20-44	10-20	30	12	50	3

PERCENTS 45.5 50.0 0 TEAM REBOUNDS (NOT IN TOTAL)

Qtrs: Owensboro
 SCORE BY: 13-9-12-16 = 50
 OFFICIALS: Wally Bevins + Dottie Brothers
 2100 est.

Owensboro
 18-22-14-17 = 71